

# Reference projects

## Office buildings

---



### **Facade Leimere Park Aarberg, Aarberg**

In a prime location in Aarberg, a commercial building has been constructed for different needs and tenants from various sectors. The building's calling card is the facade made of silver fir cladding with a green color scheme., Aarberg

---



### **Office and MFH Rüllenstrasse, Tägerwilen**

The new apartment building offers 5 residential units and four small office spaces., Tägerwilen

---



### **Conversion of tenant house, Biberstein Castle, Biberstein**

The listed residential building was converted into an office building. This included a holistic refurbishment, in which all new construction requirements came into play., Biberstein

---



### **«Krokodil» house in Lokstadt, Winterthur**

Where locomotives and machines were once built, a new district is now being created. Urban living and working space for over 1,500 people is being created right next to Winterthur railroad station. Timbatec was responsible for the timber engineering services for the first building of the new Lokstadt., Winterthur

---



### **New construction RFSM Building G, Fribourg**

To accommodate all the vehicles of staff and visitors, the mental health network expanded its site in Villars-sur-Glâne with a parking garage. On the attic floor, 1150m<sup>2</sup> of practice rooms and meeting rooms were created in wood construction., Fribourg

---



### **VIDIT workshop, Bubikon**

With the new construction of the workshop, a representative and sustainable company headquarters has been built for the Hustech company. A skeleton structure and beams and columns made of beech wood and TS3 technology reflect the innovative spirit of the company., Bubikon

---



### **Conversion Alte Dorfstr. 22, Affoltern a. A.**

In the village center of Affoltern am Albis, the residential and commercial building with the former old Schmitte on the first floor is to be preserved. Timbatec was responsible for the timber construction planning and fire protection supervision and supported the building physics with the sound insulation., Affoltern a. A.

---



### **New building workshop, Matzingen**

Domestic wood dominates at the new works yard in Matzingen. The building was completed after a construction period of around one year and was officially inaugurated at the end of September 2019., Matzingen

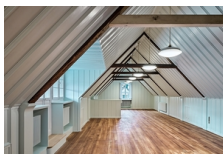
---



### **Addition of storey Gartenstrasse, Zürich**

Thanks to a new facade and an extension, the office building of Lienhardt & Partner Privatbank in Zurich appears in new splendor. Timbatec was responsible for the timber engineering services., Zürich

---



### **House to the lime garden, Zürich**

The Haus zum Lindengarten on Hirschengraben in Zurich was built in 1725. The renovation was carried out in 2018-2019, but with the least possible intervention in the existing building fabric., Zürich

---



### **New construction RFSM Building F, Fribourg**

The new four-story building for the RFSM is the first hospital in Switzerland to be constructed entirely of wood. Timbatec provided all timber engineering services for this Minergie-P building, contributing to the building's safety., Fribourg

---



### **New building: timber merchant OLWO Otto Lädach, Worb**

OLWO, a timber processor and trader, needed a new office and exhibition building. Thus, a dominant four-story wooden building has been created in the middle of Worb., Worb

---



### **House of Switzerland, Sotchi, Milano, Zürich, Davos, Rio, ...**

For "Presence Switzerland", the concept was developed for a multi-use platform with adequate space (730 m<sup>2</sup>) to serve public diplomacy and to promote Switzerland's interests at major international events. Timbatec constructed a robust, demountable timber construction system for this purpose., Sotchi, Milano, Zürich, Davos, Rio, ...

---



### **New construction industrial hall Schwarz AG, Schüpbach**

A commercial hall with a storage section, a gallery floor and an office wing according to the Minergie standard - Timbatec makes it possible., Schüpbach

---



### **New construction of the cantonal administration building Neumatt, Burgdorf**

The new Neumatt Cantonal Administration Center was built on the former armory site in Burgdorf. A large-volume building with high requirements for sustainable construction., Burgdorf

---



### **Animal hospital new office building, Zürich**

About 10 years ago, a three-year temporary office building made of containers was erected on the premises of the Zurich Animal Hospital. After two extensions of the temporary facility, a third extension was denied to the operators. Therefore, the building owners decided to build a new building., Zürich



### **New construction of residential and commercial building Hohlstrasse, Zürich**

The seven-story building is an extension to the existing commercial building and spans it cantilevered., Zürich



### **Extension of industrial building Lanz-Anliker AG, Rohrbach**

The textile processing company Lanz-Anliker AG in Rohrbach needed additional space for processing technical textiles and for offices. Clarifications showed that an addition could be built on top of the existing building., Rohrbach



### **Redevelopment Höchhus, Steffisburg**

This property in Steffisburg belongs to the Höchhus Foundation and is a listed building. The Höchhus is one of the oldest buildings in the village., Steffisburg