

Reference projects

Schoolhouses



Wiesental School, East Building, Baar

The Wiesental School in Baar was adapted to today's requirements by means of a replacement building. The project, implemented using modern timber construction methods and featuring a mega timber framework, combines functionality and aesthetics., Baar



School center Château d'eau, Marly

Marly has a new wooden school complex that combines classrooms and a sports hall. It was built with sustainability in mind, using local wood and favoring environmentally friendly practices., Marly



School extension, Courrendlin

The village of Courrendlin is building a new secondary school linked to the existing school complex. The design is a hybrid, combining wood and concrete as the load-bearing structure., Courrendlin



New school building on the Plateau de Diesse, Prêles

Between 2021 and 2023, a new school building made entirely of wood was constructed in Prêles. Swiss timber from the municipality was used by means of in-house procurement, Timbatec was responsible for the timber construction engineering work and building physics., Prêles



Modular construction education center (BZM), Muttenz

Due to a lack of school space, a two-storey modular building was constructed on a hard surface sports field. Timbatec supported the timber constructor in statics, in particular earthquake safety, construction and building physics., Muttenz



Grossaffoltern school building

Thanks to the new building to extend the existing school grounds, the new premises once again offer enough space for the increasing number of pupils in the first year.



School Richterswil, Field 1+2, Richterswil

Thanks to the extension of the existing school, the new premises again offer sufficient space for the increasing number of students., Richterswil



House Rümelbach, Rümlang

The house Rümelbach in Rümlang is a new building that meets various needs of the population. Youth meeting, training, adult education or even a playgroup find a place in one place., Rümlang



Schoolhouse Trachslau, Trachslau

So that the pupils and Kingergärtler of Trachslau do not have to make the journey to Einsiedeln every day, the school building with a gymnasium and a double kindergarten were built entirely in wood., Trachslau



Dotzigen replacement new building subject rooms, Dotzigen

Around 100 students cook, work or make music in the new school wing in Dotzigen. The wooden building convinces with a generous and flexible room concept - which requires a well thought-out structural concept., Dotzigen



Extension elementary school, Stadel

An extension will enable the kindergartens to be integrated into the Stadel elementary school. It creates the required additional space for all children., Stadel



Extension to primary school building, Aeschi bei Spiez

The primary school building in the Lower Simmental of the Canton of Bern has reached the limits of its capacity. Wood from the community's own forests could be used for the extension., Aeschi bei Spiez



School building extension Gallenbühl, Aeugst am Albis ZH

Thanks to an extension and a storey addition, the Gallenbüel school building in Aeugst am Albis once again offers sufficient space for all pupils. Timbatec was responsible for the statics and fire protection., Aeugst am Albis ZH



Schoolhouse Marzili, Bern

The Marzili school complex was built between 1946 and 1950 as a municipal girls' school. Today, it is considered an important contemporary witness of school building construction of the 20th century and is listed in the cantonal inventory as "worth protecting"., Bern



Dormitory NGG, Gänserndorf

NGG Gänserndorf offers a symbiosis of living, therapy and employment for young adults with disabilities according to their needs. The different uses are divided among four buildings, day group, training, living and therapy yard., Gänserndorf



Renovation/ new construction Cormanon school, Villars-sur-Glâne

In Villars-sûr-Glâne, two school buildings were renovated and the gymnasium and the connecting wooden wing were newly built - and all this during ongoing school operations. For everyone involved, this meant planning the work very precisely., Villars-sur-Glâne



Extension to the Allmend school complex, Oberengstringen

The new building of the Allmend school complex in Oberengstringen not only offers urgently needed classrooms, but also new group rooms that allow contemporary forms of teaching. The new school building was constructed as a hybrid of concrete and wood., Oberengstringen



Overall renovation of the Bäumlihof school complex, Basel

Timbatec Holzbauingenieure was entrusted with the planning and management of the replacement of the existing façade for the complete renovation of the Bäumlihof school complex. 18-millimeter-thick glass-fiber-reinforced concrete panels were mounted on the wooden structure., Basel



Schoolhouse Lange Heid, Münchenstein

The two new buildings on the Lange Heid school site in Münchenstein BL are dominated by wood: apart from the building cores, the two school buildings are largely made of the natural building material., Münchenstein



School complex Chrüzacher, Bassersdorf

On the initiative of Timbatec, the new school complex in Bassersdorf ended up with even more wood than planned. Originally, only the walls of the gymnasium were to be made of wood, while the roof was to be made of concrete. Timbatec suggested that the roof should also be made of wood in order to save costs., Bassersdorf



Addition of stories elementary school, Köniz

Köniz is growing overdimensionally. In no municipality around Bern has the population grown more in recent years than in Köniz - and it is getting younger and younger. Two existing school buildings were therefore each extended by one storey in wood., Köniz



Four kindergartens made of wood, Regensdorf

The over 60-year-old Roos double kindergarten in Regensdorf was replaced by a new building with four rooms. The buildings made entirely of wood create a particularly pleasant learning environment., Regensdorf



Hort Ilgen, Zürich-Hottingen

The new after-school care center at the Ilgen school complex stands in idyllic surroundings: trees surround the building designed by architects Wolfgang Rossbauer and Susanne Triller; an urban forest into which the after-school care center with its wooden façade blends harmoniously., Zürich-Hottingen



Hybrid construction for elementary school, Bonstetten

Wood characterizes the children's everyday school life at the Schachenmatten school building in Bonstetten. Built in 2015, the school building is a hybrid construction with concrete ceilings and load-bearing exterior walls made of wood. The example shows: Wood construction is also becoming increasingly important for public buildings., Bonstetten



Allenlütten school complex, Municipality Mühleberg

New building extension of the Allenlütten school complex (Mühleberg municipality) - the winning project of the Planrand GmbH architectural office., Municipality Mühleberg



School facility and library, Dietlikon

The new building consists of two floors and houses six elementary level rooms. The municipal library on the upper floor has a separate entrance., Dietlikon



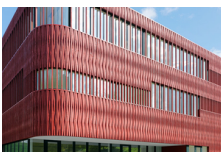
Increase International School Zurich, Wädenswil

The Zurich International School in Wädenswil decided to extend its school premises by one floor to provide additional classrooms. The large skylights stand out in particular, which posed a challenge to the load-bearing concept., Wädenswil



Addition to school Walkringen, Walkringen

In order to create more school space, the school Walkringen gets an additional floor a new outside lift. To achieve this, the existing roof structure was demolished and a new attic floor was added to the building., Walkringen



New construction of the Büttenen school complex, Luzern

According to a decision of the Lucerne City Council, the small school building in the residential district of Büttenen was to be demolished and not replaced. The children would have had to go to a school much further away. The solution?, Luzern



New construction double kindergarten, Uttigen

The new double kindergarten in Uttigen was planned and executed as a pure timber construction. The building should have a simple and inexpensive construction. The use should also remain variable - school meetings should also be able to take place there., Uttigen



Double kindergarten, Lohn-Ammansegg

The municipality of Lohn-Ammansegg wants to build a new double kindergarten. The planned object consists of 2 cubes, which are positioned laterally and offset in height on a slight slope., Lohn-Ammansegg



New construction extension school building, Uettligen

Here, a two-story rucksack addition to the existing building was to be realized, with adaptation of the existing eaves and transitions to the first building. The facade was to be created with a painted wooden formwork., Uettligen



Reconstruction school building Vogelbuch, Rizenbach

According to the architects' plans, the Vogelbuch school building was to be extended by one classroom length. In addition, the entrance area, break hall and group room were redesigned., Rizenbach



New construction of boarding school Försterschule, Lyss

An exceptional tender, a large construction volume and a short construction period characterize this project., Lyss